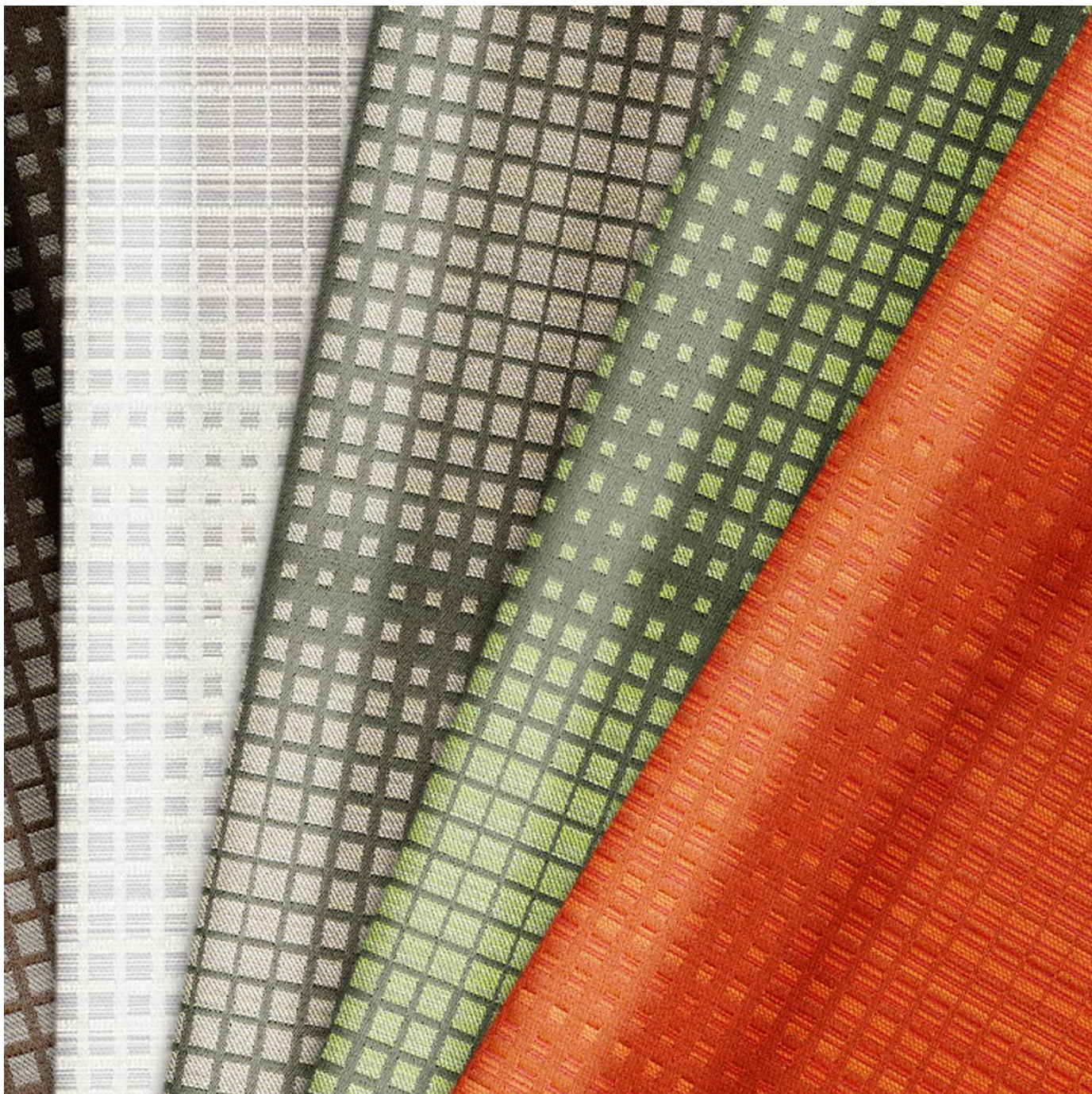


# DAZZLE

Fabrics » Woven Fabrics



Brand: **Crypton**

1300 306 399

[info@baresque.com.au](mailto:info@baresque.com.au)

[baresque.com.au](http://baresque.com.au)

1 of 4

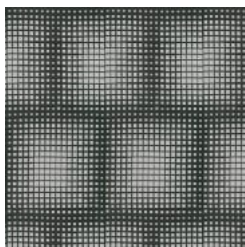


# DAZZLE

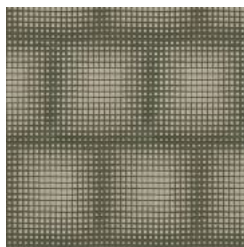
Fabrics » Woven Fabrics

## COLOURWAY CARD

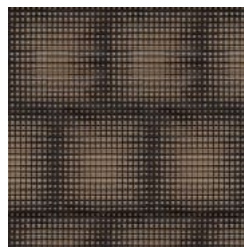
COLOURWAY CARD



9009 BLACK TIE



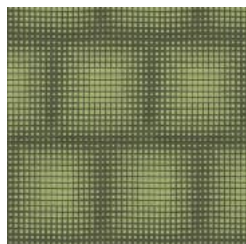
6009 CHINCHILLA



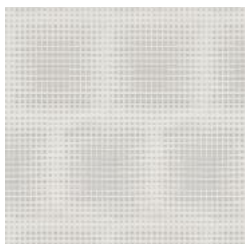
87 CIGAR



44 FLAME



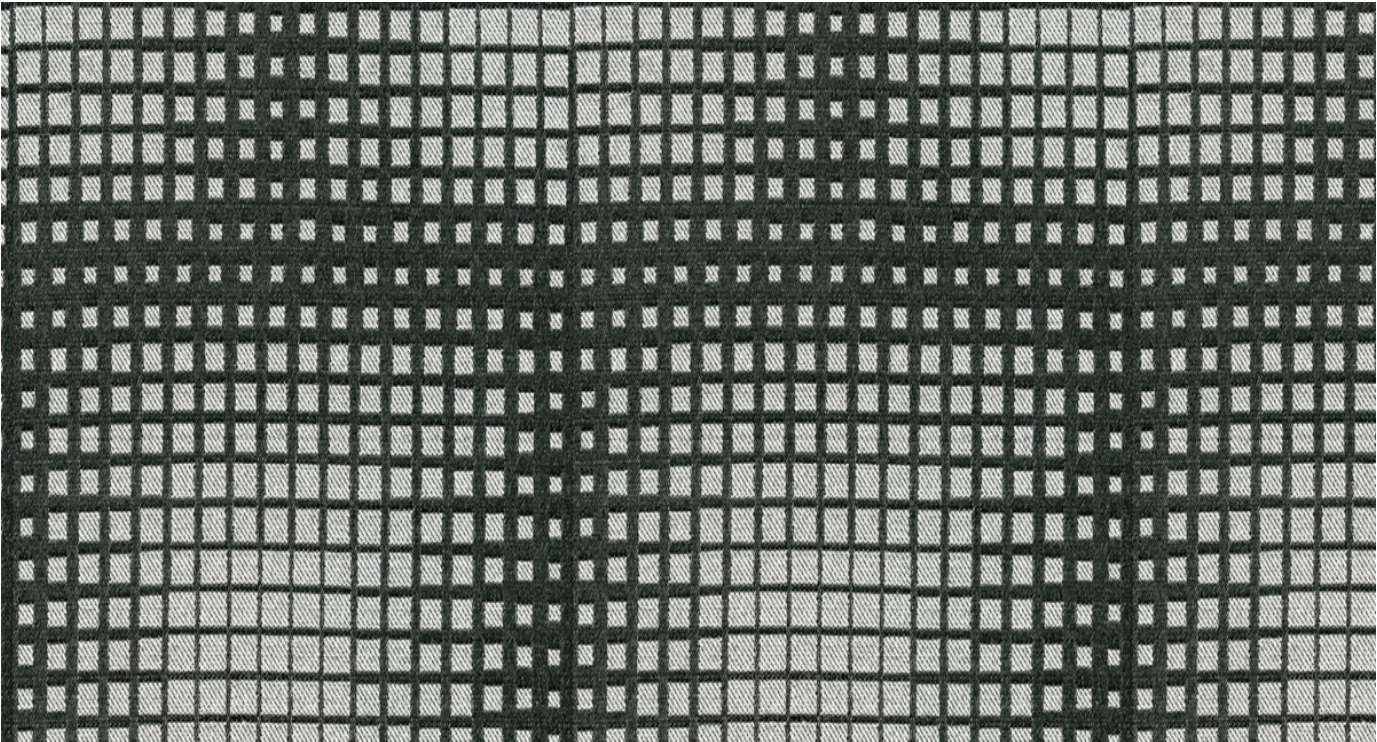
205 LIMELIGHT



91 PLATINUM

# DAZZLE

Fabrics » Woven Fabrics



Dazzle is a 142cm wide woven upholstery with a district pattern that's available in 7 colours. For indoor only

- Bleach Cleanable
- Moisture Barrier

Description	CRYPTON is a permanent moisture, soil resistance and anti-microbial protection backing.
Roll Size	142cm x Approx 45m - 55m - Available by the lineal metre
Composition	CRYPTON - 78% polyester, 18% recycled post consumer polyester, 6% recycled post industrial polyester
Abrasion	75,000+ double rubs Wyzenbeek
Pattern Repeat Size	RAILROADED - 40.4cm V / 37.9cm H
Fire Rating	This product can be treated with a fire retardant that will ensure it meets Australian Standard 1530.3. Contact Baresque for details.
Warranty	2-year warranty. Visit <a href="https://baresque.com.au/warranty">baresque.com.au/warranty</a> for complete details.

# DAZZLE

Fabrics » Woven Fabrics

---

## Lead Time

- 2-weeks (approx.) from Wednesday, subject to stock availability.
  - Additional 1-week for Western Australia.
  - Express delivery is available subject to a surcharge. Contact Baresque for details and pricing.
- 

## Care Instructions

Always use a clean, white, soft cloth.

Prepare a mixture of 1/3 Napisan and 2/3 Fab. Combine the mixture with water to make a paste about the consistency of soft margarine i.e. not too runny. Apply using a soft bristle brush. Leave for 10 minutes.

Use a brush and clean, warm water to remove the paste being sure to renew the water so that it remains clean.

Never use stiff bristles or wire brushes, as they may damage the fabric. To prevent soil build-up, frequent vacuuming is recommended.

Using a cloth to pat dry will help eliminate watermarks.

For more difficult stains, dampen a soft white cloth with a solution of household bleach (10% bleach / 90% water). Rub gently. Rinse with a water dampened cloth to remove bleach concentration.

Always test in an inconspicuous area first. If care instructions don't deliver the expected results, cease cleaning method immediately and contact Baresque for assistance.

---