

CHEVRON TILES

Acoustics » Acoustic Tiles



Brand: **Zintra**

CHEVRON TILES

Acoustics » Acoustic Tiles



ETCH BARK



ETCH BRICK



ETCH CADET



ETCH CHAMBRAY



ETCH COBALT



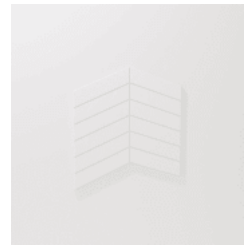
ETCH ECRU



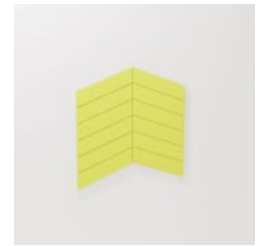
ETCH EUCALYPTUS



ETCH FOSSIL



ETCH FROST



ETCH GRASS



ETCH GREIGE



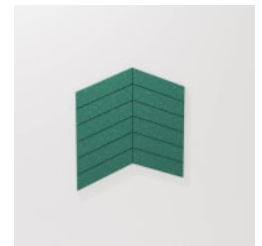
ETCH IRONBARK



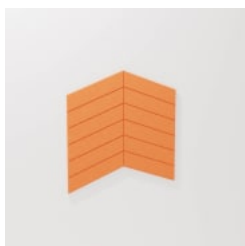
ETCH IVORY



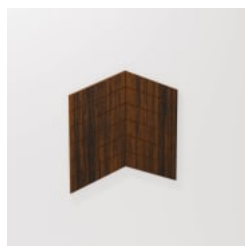
ETCH LINEN



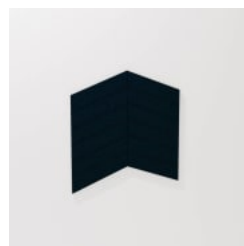
ETCH MALACHITE



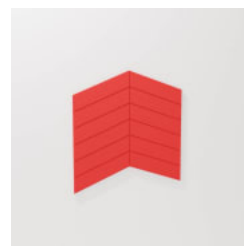
ETCH MANDARIN



ETCH MERBAU



ETCH MIDNIGHT



ETCH OCHRE



ETCH OLIVE



ETCH PEBBLE



ETCH PEWTER



ETCH SKY



ETCH SLATE



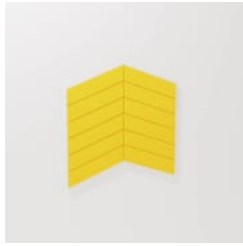
ETCH SMOKE

CHEVRON TILES

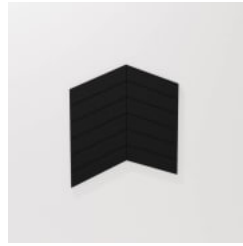
Acoustics » Acoustic Tiles



ETCH SPOTTED GUM



ETCH SUNSHINE



ETCH TAR



PLAIN BARK



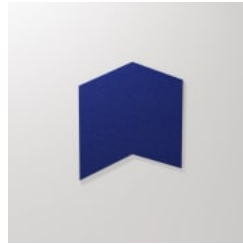
PLAIN BRICK



PLAIN CADET



PLAIN CHAMBRAY



PLAIN COBALT



PLAIN ECRU



PLAIN EUCALYPTUS



PLAIN FOSSIL



PLAIN FROST



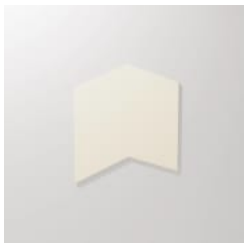
PLAIN GRASS



PLAIN GREIGE



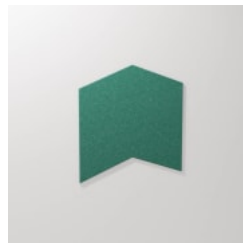
PLAIN IRONBARK



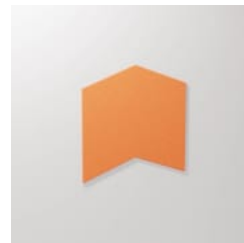
PLAIN IVORY



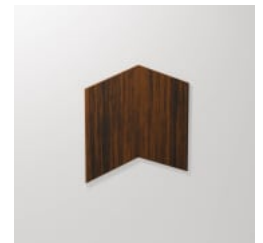
PLAIN LINEN



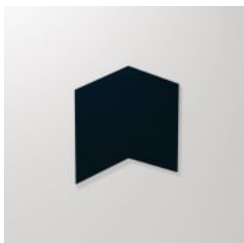
PLAIN MALACHITE



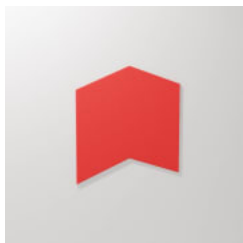
PLAIN MANDARIN



PLAIN MERBAU



PLAIN MIDNIGHT



PLAIN OCHRE



PLAIN OLIVE



PLAIN PEBBLE



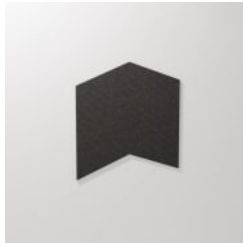
PLAIN PEWTER

CHEVRON TILES

Acoustics » Acoustic Tiles



PLAIN SKY



PLAIN SLATE



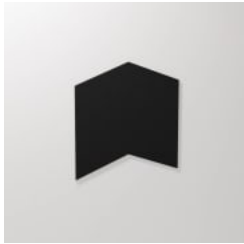
PLAIN SMOKE



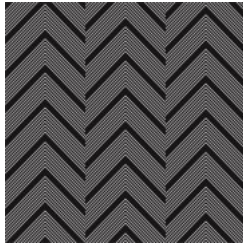
PLAIN SPOTTED GUM



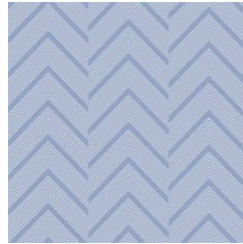
PLAIN SUNSHINE



PLAIN TAR



BLACK TIE



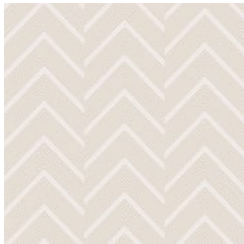
CASCADE



FOUNDRY



GARNET



SHOJI



WASABI

CHEVRON TILES

Acoustics » Acoustic Tiles



Chevron Tile is ideal for absorbing sounds and reducing the noise level in a space. Made of 100% recyclable material, it's available in 28 colours.

Description

Have some creative fun by mixing and matching Zintra Plain and Etch Tiles in 28 colours and 13 shapes. The combinations are ... well almost limitless! Install as either wall to wall or as feature artwork to create an option suitable for any commercial, education or hospitality environment. Check out the Zintra 12mm colour range in the [DOWNLOADS](#)

Composition

Zintra Acoustic Panel - 100% Solution Dyed (Colour Through) Polyester. 2.3 kg/m²

Environmental Info

Easily recycled through standard recycling channels

Warranty

5-year warranty. Visit baresque.com.au/warranty for complete details.

Lead Time

- 2-3 weeks.
- Additonal 1-week for Western Australia.

CHEVRON TILES

Acoustics » Acoustic Tiles

Suggested Installation

Supplied as a set of individual tiles.

Arrange as required.

Adhere to substrate using contact adhesive, Liquid Nails or Z clips.

Download the Handling and Installation guide for full instructions.

How to Specify

1. Zintra Colour

Care Instructions

Vacuum to remove dust.

Dab Zintra with a damp clean cloth and mild solution of liquid detergent and warm water. Repeat using only clean water, then pat dry with a lint free cloth.

For difficult stains, use a solution of household bleach (10% bleach / 90% water). To remove the bleach, repeat using a clean, water dampened cloth, then pat dry.

Always test in an inconspicuous area first and if you don't see the expected results, contact us.

Additional Comments

NRC - 0.45 Indoor only. Available in both Plain and Etch. Sold in sets. Also available with Digital Print. Not suitable as a free standing product.
